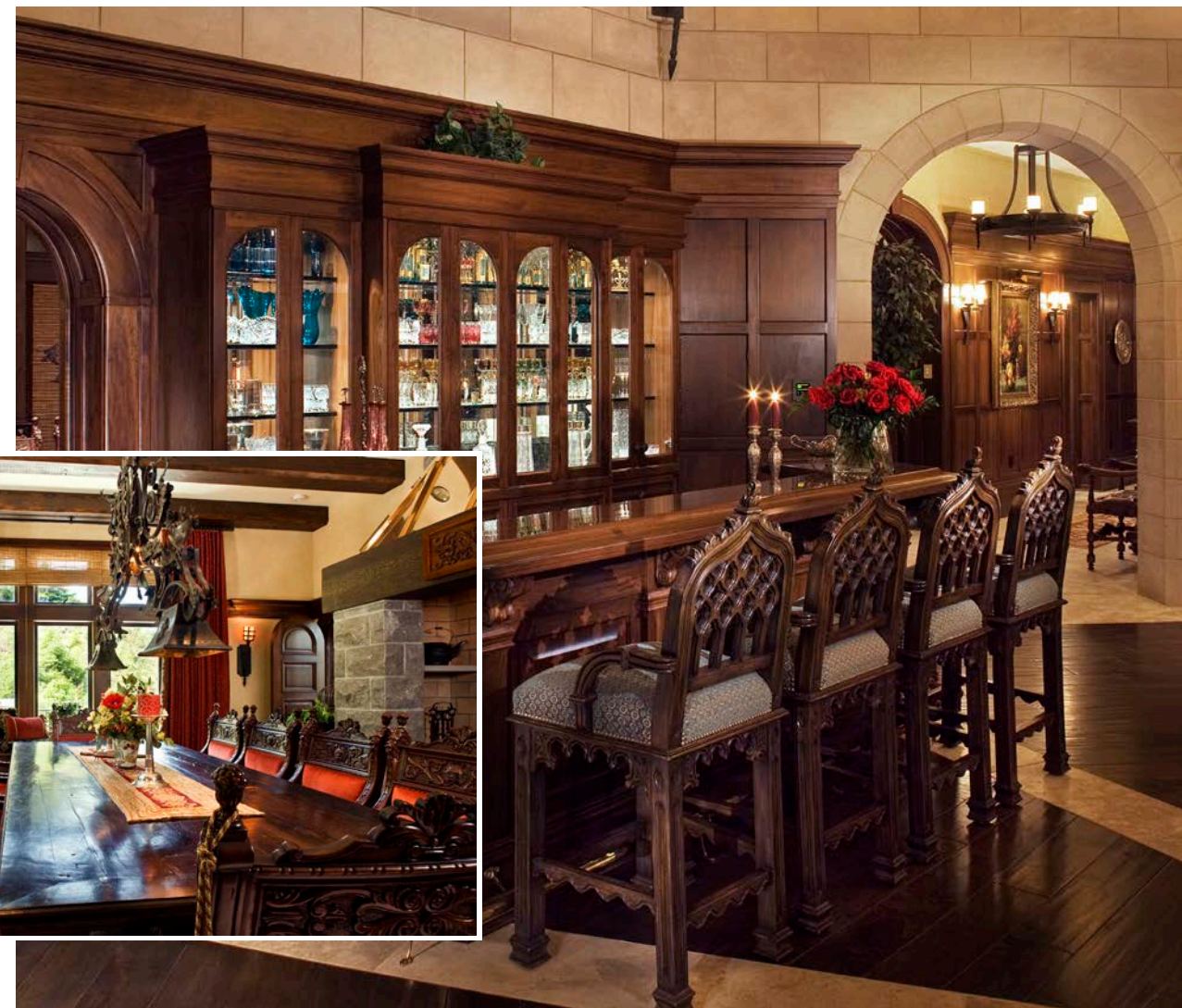
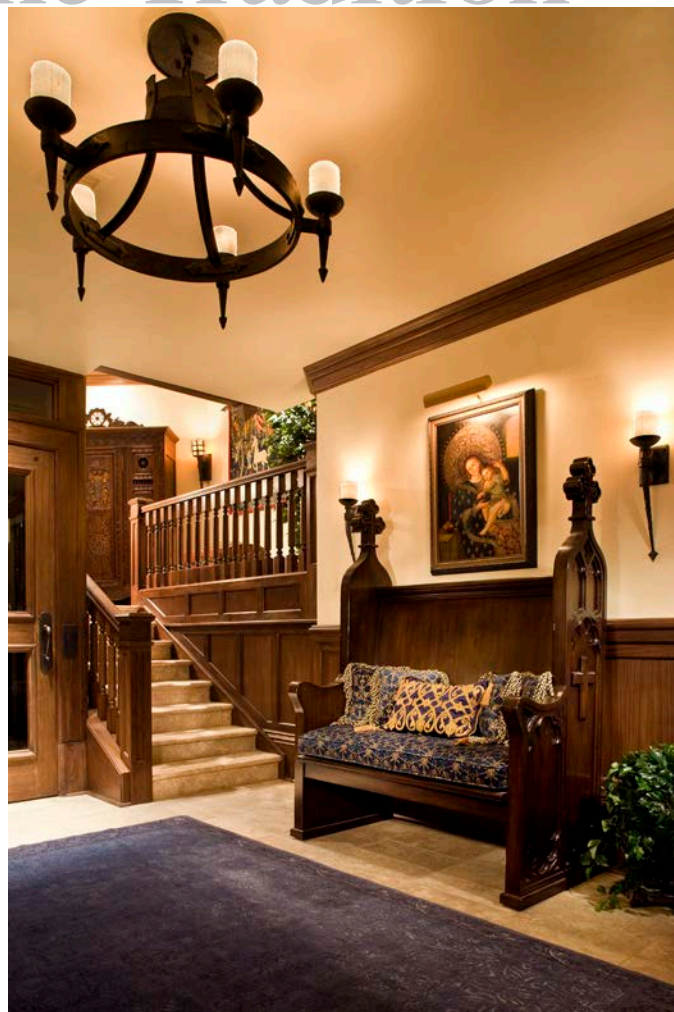


# Crafting a Fine Tradition



By Tom Juhasz

A family tradition of 78 years in the high-end furniture business is what makes JDM/Juhasz who we are today. JDM/Juhasz continued fabricating classical styles when our company moved to Los Angeles in 1979. Many of our original designer clients are still ordering from us after 37 years. Early on, JDM built a reputation for its excellent customer service and after-sales follow-up, which continues to this day with my personal attention to quality control.

For custom items that we fabricate, clients know that what they sketch will be executed exactly as they imagined it. While their furniture is in production, we email

pictures of work in progress. Designers appreciate receiving these and forwarding them to their clients.

Over the years, we have worked on many interesting and unique projects, including furniture for the British royal family's yacht. But the one that stands out for me is the Fortress project in Newfoundland, Canada – a 10,000 square foot newly constructed private castle, designed by Shannon Scott of Shannon Scott Design.

Back in the 1970's, my father's furniture company fabricated some of the furniture for the newly built palace of the Shah of Iran, and Shannon Scott's project reminded me, on a smaller scale, of all the intricate

designs and the special 15th century styles and details that we had to use. There were many design elements from Medieval, Gothic, and Renaissance periods that we used in creating all of the hand carved furnishings, including Savonarola style dining chairs, the powder room vanity, side tables, and the Gothic inspired carved bar stools and church pew. I remember that even the lion heads we carved on the dining chairs had to be "fierce looking", per Shannon and her client's request.

It is projects like this that challenge us and give our work a unique flair, creating antiques of the future, to be enjoyed by generations to come. ■